

Exclusive Manufacturing Opportunity



Stampcrete[®]
INTERNATIONAL LTD.

Customized State of the Art Equipment Package · Intellectual Property Hundreds of Special Formulas

100% Turnkey Manufacturing Opportunity of a Lifetime

It's an entrepreneur's dream.

P. Michael Fennessy, well-known inventor and founder of the Stampcrete systems, is ready to unveil the secrets that have led to his unparalleled success in the decorative concrete and coating industry.

Michael has devoted more than 30 years of his professional career in developing elite decorative concrete systems. Now, he is poised to share his manufacturing expertise on a global scale.

Michael is unveiling all of his company's coveted secrets, including more than 500 formulas he has developed, into a new state-of-the-art equipment package.

"What I am willing to do is simply clone the Stampcrete manufacturing operation all around the world, including throughout the entire United States," he said. His patented products are now available to prospective manufacturers that wish to offer the best the industry has to offer. Michael has patents and trademarks in 65 countries.

Decorative concrete is a 60-year-old industry that has gained widespread popularity as a preferred paving process throughout the world. Michael has perfected the art of decorative concrete stamping to the highest degree possible. For more than three decades, Michael has tirelessly acquired patents on stamping equipment manufactured in Syracuse, N.Y. He also has his premier trademark — Stampcrete — registered in over 50 countries.

He also owns the trademarks Mirage, Re-Do-It, Redeckit and The Sealer Depot in the United States with first-use rights globally. The Sealer Depot manufactures 10 different types of sealers. Michael has perfected the highest-quality formulas for producing the purest integral colors, color hardeners, colored release agents, highlighting colors, masonry stains, and various types of cement-based overlayments. He recently added leveling materials for repairing substrates. "Stampcrete concrete stamping tools are superior in every way and unmatched to anything on the market today," he said.

Michael personally designed the state-of-the-art, high-tech and highly efficient equipment and is now ready, for the first time ever, to share all of his trade secrets with the world. The offering includes more than 30 years of trade secrets, formulas, proprietary vendors and custom marketing aids in four-color design layouts that can currently be translated into 10 different languages. He is also prepared to offer all information regarding equipment and materials in any language required.

This offer is being launched now and is supported by full-page advertisements in several highly regarded worldwide industry publications. Michael is also spearheading an extensive e-mail campaign that is being presented on a country-by-country basis.

Michael is also considering the possibility that several smaller countries could group together to form a particular market region.

This once-in-a-lifetime offer will be featured at the 2017 World of Concrete to take place Jan. 16-20 at the Las Vegas Convention Center. Look for booth #S13422.

For more information, call 315.451.2837 or 800.233.3298.

You can also email pmf@stampcrete.com or visit www.stampcrete.com.

Stampcrete®
INTERNATIONAL LTD.

**All freight expenses including Ocean going containers to nearest port
Customized equipment package set up by our experts in your factory
Training by our senior staff including VP of the company**

INTELLECTUAL AND PROPRIETARY PROPERTY

All intellectual property pertaining to material, urethane , sealer formulas and trade names will be included with licensing rights. This will also include proprietary raw materials and vendors list.

- Trademark License
- Manufacturing License
- Proprietary Formulas
- Customized State of Art equipment package
- Two weeks training on manufacturing all the products
- Two weeks field training on installing both the Stampcrete and Redeckit Systems
- Two weeks on manufacturing stamping tools sets.
- Trade Secrets
- Proprietary Vendor list
- Five years of ongoing technical support
- New Stamping tool designs
- *New Stampcrete Wall System* (Presently under developement)

SAMPLE COST OF PRODUCTS AND PROFIT MARGINS

PRODUCT LINE	YOUR COST	WHOLESALE (@ 50%)	RETAIL
Color Hardener - 10 m2	\$11.00	\$20.00	\$41.95
Release - 100 m2	\$13.00	\$44.50	\$89.00
Integral Color - 1 m3	\$8.50	\$20.48	\$40.95
Patina Stain - 18.9 liter	\$23.00	\$99.00	\$209.00
Sealer 18.9 liter	\$55.00	\$110.00	\$229.00
Mirage/Redeckit 22.7kg	\$11.00	\$22.00	\$44.00

**This is a spread sheet of total costs to manufacture based upon manufacturing in the U.S. This includes overhead, raw materials, labor and packaging. All costs are in USD (\$).*

Marketing Aids

Stampcrete has spent three decades perfecting its marketing strategy and marketing materials including the world number one comprehensive web-site. As a result, it has an in-depth marketing material library and a adaptable strategy for marketing its decorative concrete materials. The company operates under various registered trademarks and brand names. These include STAMPCRETE, REDECKIT, THE SEALER DEPOT, MIRAGE, RE-DO-IT, REDECK and PATINA STAIN.





COLOR CHART

Stampcrete
INTERNATIONAL LTD.

325 Commerce Boulevard • Liverpool, New York 13088 USA
315-451-2637 FAX 315-451-2230 In North America: 1-800-233-3236 Email: info@stampcrete.com www.stampcrete.com

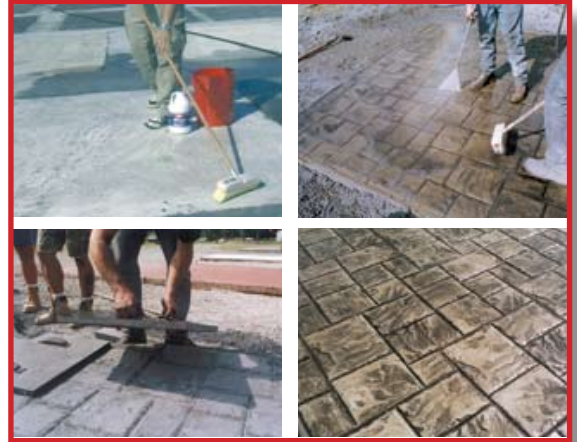
Redeckit
www.redeckit.com

CORPORATE BROCHURE

Stampcrete[®]
INTERNATIONAL LTD.

FACTORY PRE-OPENING HANDS-ON SEMINAR

The company will conduct hands-on seminars at your company headquarters. During the training your company needs to hire local experienced concrete finishers to be the company trainers in the future seminars and training. By having skilled trainers working for your company it will allow you to hold seminars during the six month period prior to the factory opening throughout your exclusive territory. This is the most effective method of placing exclusive distributors and construction companies in your territory as well as getting thousands of dollars worth of orders prior to opening of the factory. Our company will be sending its senior trainers which have several decades of installing both the Stampcrete and Redeckit System. While in your country they will make an outdoor showroom showing all the stamping designs you will be producing along with several designs of the Redeckit System. These will all be done in different colors. Trainers will also be installing a project using the Stampcrete System and one of the Redeckit Systems. These projects will be around 75 to 100m² in size (750 to 1,000 sq. ft.) Company suggests that you invite the following all interested leads the company furnished you with along with Builders, Architects, Engineers, local city and country officials. For these pre-opening seminars your company will need to order 10 different stamping tool sets, Stampcrete supplies, Redeckit supplies. Company recommends one 40' containers in order to hold seminars prior to opening and you will receive a 40% discount on your order. As part of your license fee, the company pays trainers salary, airlines, hotel, meals.



STAMPCRETE ,MIRAGE, RE-DO-IT, PATINA STAIN, AND THE SEALER DEPOT

- Corporate brochure
- Equipment /product catalog
- Color chart
- Marketing DVD
- Training DVD
- America's number one web-site ready for your use

REDECKIT

- Corporate brochure
- Equipment/product catalog
- Color Chart
- Marketing DVD
- Sample display boards
- Training DVD
- America's number one web-site ready for your use

CUSTOM AND SPECIALIZED EQUIPMENT

The customized equipment package that comes with the manufacturing license includes all state of the art equipment necessary to produce the finest line of Sealers, Patina Stains, Colored Release Agent, Color Hardeners, Highlighting Colors, Integral Colors, Stamp Over-layer Systems, together with our world famous Stamping Tools. This customized equipment package is 100% turn-key. All shipping expenses to your nearest Port are included. We then send a team of experts to set this equipment package up in your factory in your country.

Our State of the Art high speed release blending machine is unlike anything else on the market today. Its fast and efficient. The machine allows you to make a batch of colored release agent in around five minutes. This unique blending method allows you to produce the finest quality formula color release agent of any company in the world. Company will provide you with 24 different formulas for producing colored release agents

- Penn Blue • Sand • Shadow Gray • Slate Green • Subtle Rose
- Platinum Gray • Terra Cotta • Toffee • White • Arizona Tan
- Brick Red • Cabernet Red • Cedar Brown • Charcoal • Dark Brown
- Dark Gray • Medium Gray • Golden Amber • Light Gray • Light Brown
- Marina Blue • Mauve • Medium Brown





RIBBON BLENDER WITH HIGH SPEED CHOPPER

- Custom made Ribbon blender with high speed chopper
 - Custom control panel to run blender
- Staging platforms, ladders, railings for equipment access

PRODUCTS PRODUCED BY THIS CUSTOMIZED RIBBON BLENDER **INTEGRAL COLORS**

- Platinum • Silver • Light Gray • Dark Gray • Leather • Autumn • Tan
- Deep Tan • Rust • Brick Red • Goldenrod • Deep Goldenrod • Tile Red
- Terra Cotta • Buff • Copper • Deep Copper • Light Brown • Dark Brown
 - Sandstone • Flagstone • Beige • Westwood Brown • Bayberry
- Khaki • Coral • Slate Green • Champagne • Sienna • Salmon • Maroon
 - Almond • Cider • Saddle • Wheat • Palisade

COLOR HARDENERS

- Beige • Brick Red • Brown • Buff • Charcoal • Chocolate • Coral • Cordovan
- Dark Gray • Granite • Green • Mauve • Penn Blue • Plum • Russet • Sand
- Silver • Tan • Taupe • Terra Cotta • Tile Red • Sable • Adobe Buff • Sun Buff
 - Sun Gray • Pewter

HIGHLIGHTING COLORS

- Brick Red • Chocolate • Penn Blue • Slate Green • White • Black • Mauve

REDECKIT OVER-LAY MATERIAL

- Silver • Dark Gray • Beige • Dark Brown • Terra Cotta • Slate Green

MIRAGE OVER-LAY MATERIAL

- Silver • Dark Gray • Beige • Dark Brown • Terra Cotta • Slate Green

RE-DO-IT

- White • Gray (add integral colors of your choice to obtain your desired color)

ADVANCE STATE OF THE ART PACKAGING SYSTEM

Our advanced packaging system allows you to take the finished products made in the ribbon blender using aluminum or stainless steel totes to the actual computerized packaging machine. These totes are then placed on the Tilt Discharge unit which turn the tote upside down and allow the material to start following in the packaging machine. With this packaging unit you can fill bags starting at 2.7kg (6lbs) to 22.7kg (50lbs). Unit will also be able to fill 22.7 pails for the Redekit System as well as the Mirage and Re-Do-It Systems.



ULTRA-SHEEN SEALERS

Our sealer equipment comes with 500 gallon or 1,500 liter stainless steel mixing tank, explosion proof mixing unit, filling pump with all hoses, packaging platform scale with packaging hoses and filling nozzle, complete Lab testing equipment including ph meter, analytical balance, convention oven, viscosity #4 mini ford dip cup, drawdown plate, drawdown bar, and mini weight per gallon. Raw material suppliers, packaging suppliers along with on-site training. Company will teach you how to manufacture seven different Ultra-Sheen solvent base sealers and two Ultra-Sheen water-base sealers. Our sealers come in a low gloss, medium gloss and high gloss finish. We package them into 3-gallon 11.35 liter, 5-gallon 18.9 liter cans along with 55-gallon of 207 liter drums.





PATINA STAIN

Company presently manufactures ten different colors of this acid based stain which is compatible with cement based building materials that include concrete, brick, block, along with precast concrete. Patina Stains are semi-transparent and should not be used where the project calls for a solid color. You can use several different colors of these stains to achieve a marbleizing surface. These stains are made in 378 liter (100-gallon) poly tanks with a fitting on the bottom of the tank for packaging



STAMPERS FRIEND

The company's Stampers friend is a unique chemically based product that is mixed with water in a 378 liter (100-gallon) poly tank and packaged into 3.78 liter (1-gallon jugs) and 18.9 liter (5-gallon pails). This product is a surface retarder and acts as a finishing agent which slows down the drying of the surface during windy days which gives the contractor more time to stamp the surface.



Company provides in its turn-key equipment package



COMMERCIAL DUST COLLECTOR



**COMMERCIAL
AIR COMPRESSOR**



PALLET WRAPPER



SHIPPING PROGRAM TO NEAREST PORT



The company pays
all the inland trucking
expenses and all ocean
going containers to
your nearest port .

STAMPING TOOL MANUFACTURING LICENSE

The company will train and teach the technique of making master molds during the training at their factory. Learning this technology, your company will save up to \$1,000 on each design mold as they have a life of seven years. There is no other company in the world willing to share this types of trade secrets. We will provide all the room temperature Urethane formulas for your staff to learn how to manufacture stamping tool sets. Our trainer will teach the manufacturing of the stamping tools for two full weeks which is more than enough time to learn this system. Included in this customized equipment package are the following:

• *Design Molds*

including the following designs:

- Texture Stone
- Arizona Flagstone
- Basket Weave Brick
- Herringbone Brick
- Wood Board Plank
- Running Bond Brick
- Ashlars Slate
- California Fieldstone
- European Cobblestone
- Brick Border molds
- Cobblestone border
- Random Cobblestone
- Textured Tile

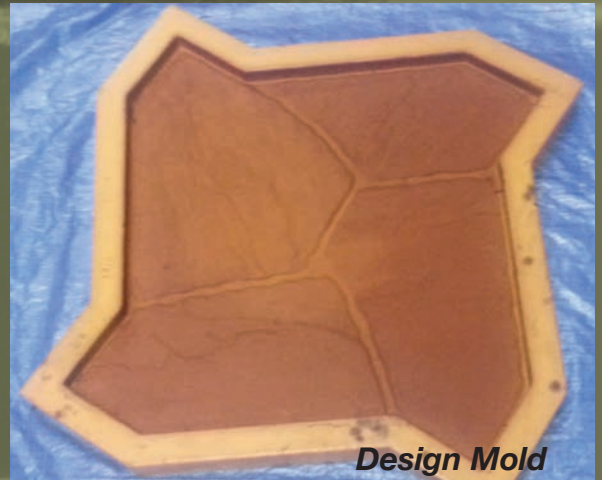
also included in the package are all of the following,

- Comark digital urethane thermometer
- Urethane durometer meter
- Urethane barrel loader
- Urethane electric band heaters
- Urethane mixing dollies
- Urethane electronic scales
- Urethane barrel rack stations
- Urethane mix rods
- Urethane mixers
- Urethane mixing stations



Design Mold

10



Design Mold





BUILDING AND PERSONNEL REQUIREMENTS

Building requirements will vary depending on your location. However we have suggested some minimum requirements for a facility which are listed below.

- At least a 2,000 m² (20,000 sq. ft) building without stamping tool manufacturing and with the tool manufacturing, a 2,500 m² (25,000 sq. ft) building is needed for manufacturing, storing of raw materials, finished products and stamping equipment.
- Personnel needed should be a minimum of 10 to 12 plus office and department heads.
- Building requirements are not extravagant steel or block building with ceiling heights of 7 to 9 meters building can be old or new your choice.
- Electrical requirements should be in accordance with local electrical current. Your company electrician will give our electrician details on what type of electric power the motors must run on at your factory.

All formulas will be provided in a written format in English and all measurements will be in metric. All Safety Data Sheets (SDS) and technical data sheets will be in English. Operation manual, will be in written format in English.

Products included in the formulations are:

- Redeckit material
- Primer (used with Redeckit and Mirage Systems)
- Mirage (Stamp Over-layer System)
- Colored Release agents
- Liquid release agent
- Patina Stains
- Stamping Tools
- Stampers Friend (Used with Redeckit and Stampcrete Systems)
- Stamp grip (used with Redeckit and Stampcrete Systems)
- Re-Do-It Over-layer System
- Integral Colors
- Highlighting Colors
- Color Hardeners
- Surface leveling material
- Sealers



TRAINING ON MANUFACTURING

Training on the manufacturing process will be done at the licensee's location and country . The training covers every aspect of manufacturing the full line of Stampcrete and Redeckit materials and equipment. Company will provide personnel to set-up equipment package and review maintenance and safety guidelines. Licensee should have their key personnel heading up the training. Listed below are some of the items our trainers will cover.

- Training on stamping tools including maintenance.
- Training on customized equipment to produce of all the product line. Trainer also covers maintenance of all the equipment.
- Packaging
- Sales and Marketing strategy.

STAMPCRETE GLOBAL TRADE NUMBERS:

COUNTRY	TRADEMARK NUMBER	UNITED STATES PATENT NUMBERS	
UNITED STATES		Stamp Production	5,219,511
Stampcrete	No. 1,581,911		6,951,435
Mirage Overlay	No. 2,577,672		5,061,172
Re-Do-It	No. 3076606	Sand Blasting	6,848,979
Redeckit	No. 4,255,121	ADA Stampings	5,271,690
The Sealer Depot	No. 5,004,714	Stamp Design	D 338 817
MEXICO	No. 1581911	Logo/Concrete	6,444,077
NORWAY	No. 232985		
BOTSWANA	No. BW/M/05/00178		
ZIMBABWE	No. 651/2005		
CANADA	No. 681 524		
Redeckit	No. 781 125		
GREAT BRITAIN & NORTHERN IRELAND	No. 1531593		
FRANCE	No. 98 732 387		
GERMANY	No. 398 25 211		
JAPAN	No. 4310740		
ISRAEL	No. 129815		
UNITED KINGDOM - including: England, Scotland, Wales and Northern Ireland	No. 1,531,592		
EUROPEAN UNION - including: Austria, Belgium, Bulgaria, Croatia, Cyprus, Czech Republic, Denmark, Estonia, Finland, Former Yugoslave Republic of Macedonia, France, Germany, Greece, Hungary, Ireland, Italy, Latvia, Lithuania, Luxembourg, Malta, Netherlands, Poland, Portugal, Romania, Slovakia, Slovenia, Spain, Sweden, Turkey, United Kingdom	No. 819227		
MADRID PROTOCOL: Namibia, Lesotho, Swaziland, Russia, China, South Korea, India, Switzerland	No. 862844		

P. Michael Fennessy
CEO/President
pmf@stampcrete.com
stampcretefl@comcast.net

Stampcrete International, Ltd.

325 Commerce Blvd

Liverpool, New York 13088

Ph: 315.451.2837

Fx: 315.451.2290

North America 1.800.233.3298

Corporate email: info@stampcrete.com

www.stampcrete.com

All inquiries are discreet and confidential