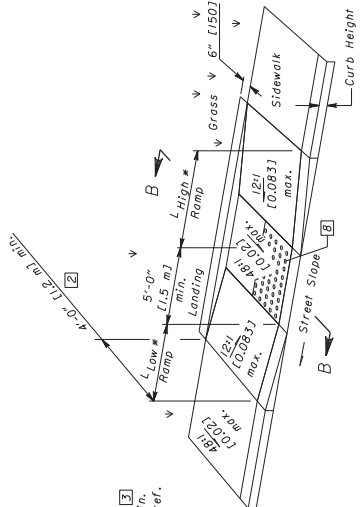


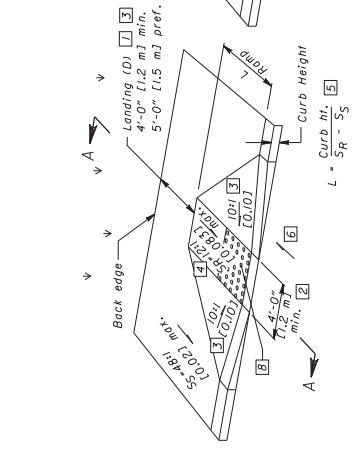
Street Slope	Ramp Length @ 1" / 11' (0.083)	
	L-LOW SIDE *	L-HIGH SIDE *
0.01	5'-5" [1.6 m]	6'-10" [2.1 m]
0.02	4'-0" [1.2 m]	7'-4" [2.2 m]
0.03	4'-5" [1.3 m]	7'-5" [2.3 m]
0.04	4'-1" [1.2 m]	7'-8" [2.4 m]
0.05	3'-9" [1.1 m]	7'-2" [2.1 m]

* Measured along the back of a 6" [150] high curb.

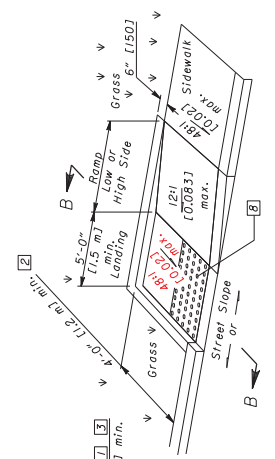
L HIGH * 0.083 - Street Slope [7]
 L LOW * 0.083 + Street Slope [7]
 Curb ht. Curb ht.
 0.083 + Street Slope [7]



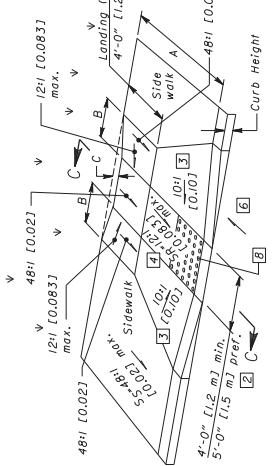
See Sht. 3/3 for SECTION B-B
 PARALLEL CURB RAMP DETAIL (DOUBLE)



See Sht. 3/3 for SECTION A-A
 PERPENDICULAR CURB RAMP DETAIL



See Sht. 3/3 for SECTION B-B
 PARALLEL CURB RAMP DETAIL (SINGLE)

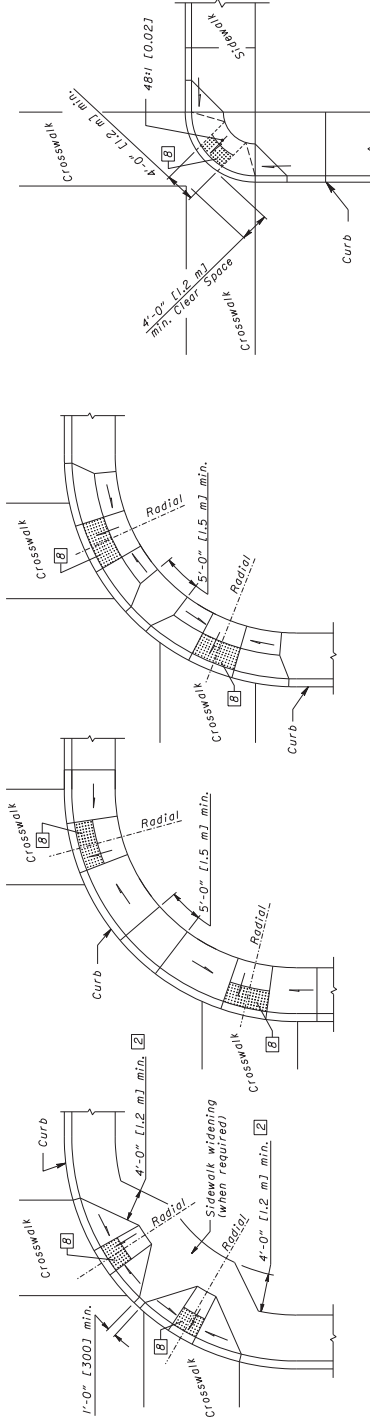


See Sht. 3/3 for SECTION C-C
 COMBINED CURB RAMP DETAIL
 B = C / 0.083
 C = [Curb ht. + A(S_S)] - [(A-D)SR + D(0.02)]

LEGEND

- May be reduced to 3'-0" [915] in existing sidewalks if the landing is unconstrained along the back edge.
- May be reduced to 3'-4" [1.02 m] in existing sidewalks to better fit the walk configuration or where site conditions are restricted by narrow walks, pole foundations, drainage inlets, etc. The width may be tapered.
- Where landing width (L) has been reduced to 3'-0" [915] the flared sides shall have a maximum slope of 12:1 [0.083]. Flared sides are not required where the edges of a curb ramp are protected by landscaping or other barriers to prevent wheelchairs or pedestrian carts from crossing the edge of the ramp. Minimum clearances for such areas are used in these areas, they may be of any slope.
- The slope of the ramp toward the curb is preferred to be 12:1 [0.083] or flatter, related to the horizontal, but the maximum slope shall be 12:1 [0.083] relative to the existing or proposed walk slopes.
- In existing sidewalks, where the maximum ramp slope (S_R) is not feasible, it may be reduced as follows:
 A) 10:1 [0.10] for a max. rise of 6" [150].
 B) 8:1 [0.125] for a max. rise of 3" [75].
 C) 6:1 [0.167] over a max. run of 2'-0" [610] for historic areas where a flatter slope is not feasible.
- The minimum length of a perpendicular ramp is 6' [2.0 m] from the back of a 150 curb and may be increased where the back of curb is not parallel to the ramp slope or to better blend with the walk configuration. Ramp slope or to better ramps should not exceed 20:1 [0.05] over a distance of 2'-0" [610] from the curb.
- Greater counter slopes at the foot of perpendicular curb ramps to meet required slopes and existing conditions.
- Dimensions derived by equation are nominal. Construct ramps to meet required slopes and existing conditions.
- Obtainable Working (truncated domes) are to be installed at the location shown. Dimensions of the domes are 24" [610] from the back of the curb by the width of the ramp. See NOTES on sheet 3.





DESIGN A
PERPENDICULAR RAMP

DESIGN B
PARALLEL RAMP

DESIGN C
COMBINATION RAMP

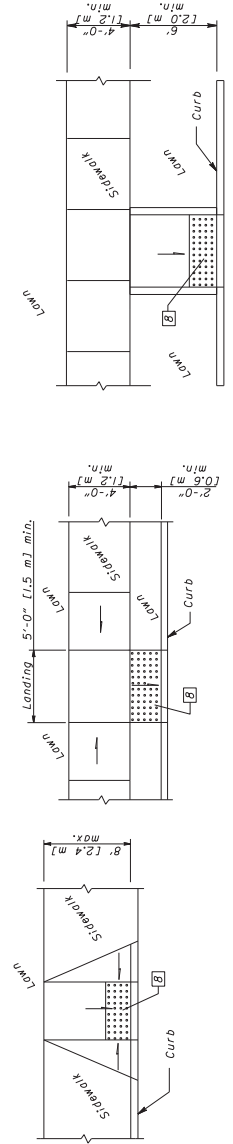
DESIGN D
DIAGONAL RAMP

Use in existing walks only and when site constraints prohibit other designs. The diagonal ramp may be perpendicular, parallel, or combination. Avoid use where curb radii are less than 20'-0" (6.0 m).

CORNER CURB RAMP DESIGNS

(See Curb Ramp Details on Sh. 1/3 for additional requirements.)

For LEGEND, See sheet 1.



DESIGN E
PERPENDICULAR RAMP

DESIGN F
PARALLEL RAMP

DESIGN G
PERPENDICULAR RAMPS W/O FLARES

MID BLOCK CURB RAMP DESIGNS

(See Curb Ramp Details on Sh. 1/3 for additional requirements.)

NOTES

SURFACE TEXTURE: Texture of concrete surfaces shall be obtained by coarse brooming transverse to the ramp slopes and shall be rougher than adjacent walk.

TRUNCATED DOMEs: Install detectable warnings (truncated dome) in accordance with Item 705.03 with a minimum overlap of the curb for the entire width of the ramp opening as shown on details on Sheet 1.

Pavers will meet ASTM C 902 Class Sx, Type I, or C 936, or C 1212 Type II.

Acceptable manufacturers and products are:

- 1) Whitacre-Greer, Fireproofing Company, (603) 890-1800; **WG PAVER**
- 2) **MO S. Mohamud, Inc., Chicago, Ill.**
- ADA Paver, 4"x8"x2-1/4", Clear Red (Rubict) #30.

- 2) Hanover Architectural Products, **240 Bender Rd., Hanover, PA, 17331, (717) 637-0500**
Detectable Warning Paver, 12"x12"x2", or 24"x24"x2", Red or Quarry Red.
- 3) Enclizart Clay Products, **69355, (402) 729-5804**
Handicap Detectable Warning Paver, 4"x8"x2-1/4", Red Blend.

Pavers will laid on top of a 4" [100] unreinforced concrete base. Settle bed and joints in accordance with manufacturer's instruction, or with a maximum 1/2" [13] thick bed of latex modified cement mortar. Mortar joints to a width not greater than 3/8" [4] touching each other unless they have spacing bars.

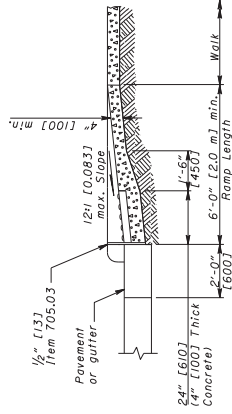
Mortared joints are to be flush with top surface and mortar joints to be smooth surface. Mortar shall be laid such that joints are level with adjoining joints so as to provide a smooth transition from brick to brick and brick to concrete surface.

The surface of any two adjacent units should not differ by more than 1/8" [3] height. Bricks shall be placed in a running bond pattern. Face of all brick shall be clean of cement and protected so as to avoid chipping during construction.

EXPANSION JOINTS: shall be provided in the curb ramp as extensions of walk joints and consistent with Item 608.03 requirements for a new concrete walk.

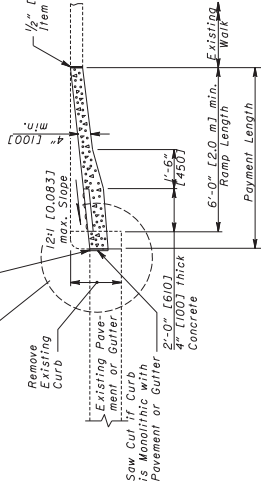
A 1/2" [13] Item 705.03 expansion joint filler shall be placed around the edge of ramps. This joint filler shall be cast in concrete. The drawing shall indicate the ramp edge and slope changes and are not necessarily joint lines.

PAYMENT: Walk and curb, Items 608 and 609, shall be measured through the curb ramp area paid for under their respective Items. Item 608 - Curb Ramp, As Per Plan, Each constructed in new curb and walk shall include the cost of any additional materials and installation, including Curb Ramp. As Per Plan, Square Foot Meter), constructed in existing curb and walk shall include the cost of furnishing and installing all materials (including truncated domes), including the cost of any additional materials and installation of the curb ramp. Removal of existing curb and walk shall be paid for under Item 202.

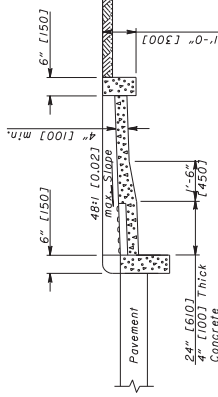


**SECTION A-A
NORMAL DETAIL**
See Sheet 1 of 3.
(Gutter shown)

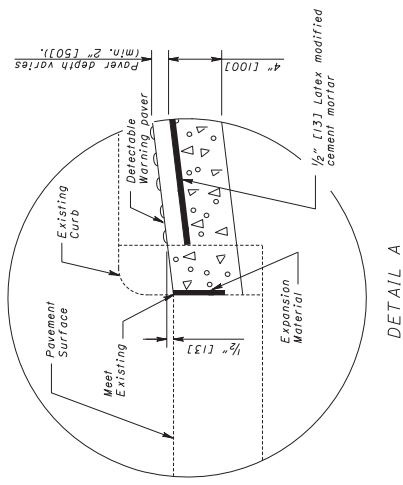
See DETAIL A
Adjacent to P.C.C. - 1/2" [13] Preformed Joint material Item 705.03 with Joint Sealer applied per SCD BP-51.



**SECTION A-A
EXISTING WALK DETAIL**
See Sheet 1 of 3.



SECTION B-B
See Sheet 1 of 3.



DETAIL A

SECTION C-C
See Sheet 1 of 3.